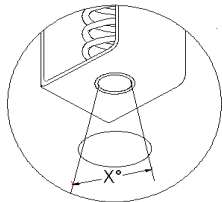
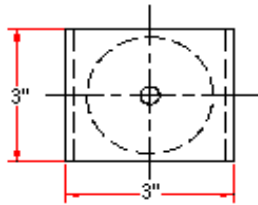
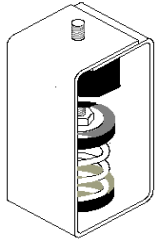


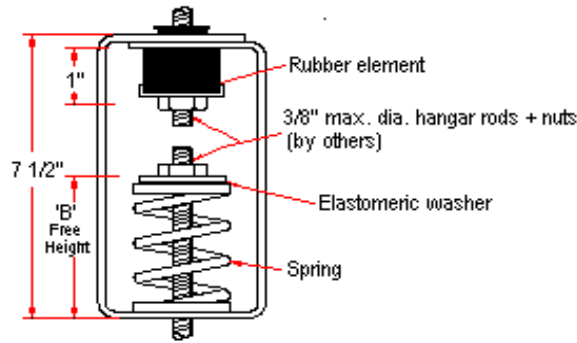
VIBRATION MANAGEMENT CORPORATION

3532-A EAST TC JESTER , BROOKWOOD BUSINESS PARK , HOUSTON , TEXAS 77018 , U.S.A

INTERNET ADDRESS: www.vimco.biz



X=46° for springs 121 to 127
X=28° for springs 101 to 112



N.T.S.

ISOLATOR MODEL	RATED LOAD (lbs)	SOLID LOAD (lbs)	'B' inches
HSB-HM-121	40	60	3 3/8
HSB-HM-122	66	100	3 3/8
HSB-HM-123	110	165	3 3/8
HSB-HM-124	173	260	3 3/8
HSB-HM-125	246	370	3 3/8
HSB-HM-126	300	450	3 3/8
HSB-HM-127	560	840	3 3/8
HSB-HM-101	56	85	4 5/8
HSB-HM-102	76	115	4 5/8
HSB-HM-103	113	170	4 5/8
HSB-HM-104	150	225	4 5/8
HSB-HM-105	216	325	4 5/8
HSB-HM-106	300	450	4 5/8
HSB-HM-107	400	600	4 5/8
HSB-HM-108	500	750	4 5/8
HSB-HM-109	600	900	4 5/8
HSB-HM-110	733	1100	4 5/8
HSB-HM-111	866	1300	4 5/8
HSB-HM-112	1000	1500	4 5/8

NOTES

1. Springs have 50% additional travel to solid beyond rated load.
2. Isolators should be selected in the range of -30% to +25% of rated load.
3. Consult spring chart for isolator performance data.

FEATURES

- * Oil + water resistant rubber element
- * Rubber element incorporates projected collar to prevent metal to metal contact between rod and bracket.

Notes / Remarks :

Project :
Client :
Consultant :
Representative :

Title :

HSB-HM
Neo-Spring™ Hanger
(1" deflection)

Drawing no.
S-2400.06

Rev. 2